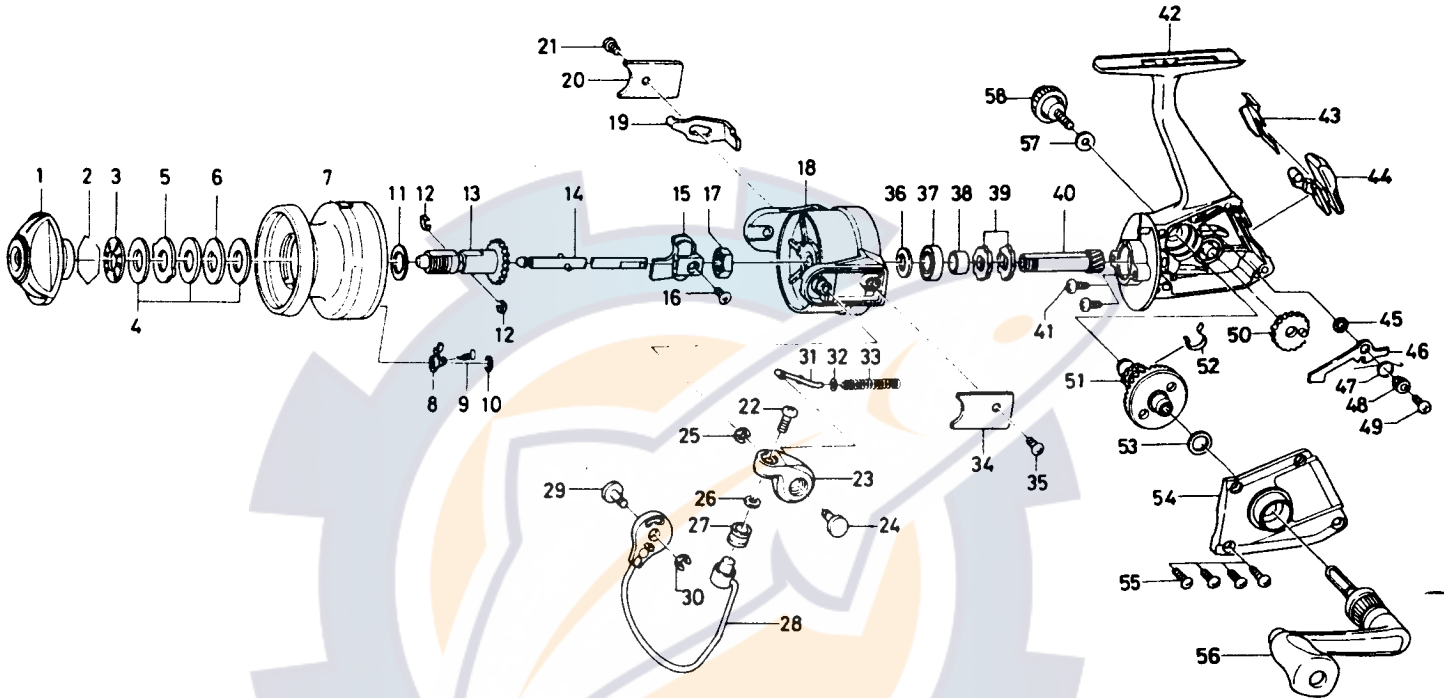


SPINNING REEL GS16UL



Key No. 2-13
E16-3301 Spool assembly (Deep Spool)

Key No.	Parts No.	Parts Name
1	E16-2501	Drag knob
2	171-7701	Drag washer retainer
3	E15-4101	Drag washer A
4	E14-3301	Drag washer B
5	373-3603	Eared washer
6	374-4802	Key washer
7	E16-3401	Spool (Deep spool)
8	B07-5302	Click pawl
9	144-1211	Click spring
10	320-5901	Click retainer
11	E12-3501	Spool washer
12	151-7211	Spool metal leaf spring
13	720-1721	Spool metal
14	E16-1401	Main shaft
15	E16-1301	Oscillating slider
16	351-0311	Oscillating block screw
17	341-9201	Rotor nut
18	E20-1801	Rotor assembly
19	E20-2601	Bail trip lever
20	E20-2401	Bail trip cover
21	B83-4401	Bail trip cover screw
22	B67-9303	Line roller screw
23	E20-1901	Bail arm
24	E20-2001	Bail arm screw
25	320-5901	Bail arm screw retainer
26	B55-4301	Line roller washer
27	250-3921	Line roller
28	E20-2201	Bail
29	E20-2001	Bail arm screw

Key No.	Parts No.	Parts Name
30	320-5901	Bail arm screw retainer
31	E11-5801	Bail spring shaft
32	E11-5901	Bail spring washer
33	E22-4501	Bail spring
34	E20-2101	Bail spring cover
35	B83-4401	Bail spring cover screw
36	375-8501	Bail kick cam screw
37	637-5701	Ball bearing
38	E16-1101	Spacer
39	E11-3501	Anti-reverse ratchet
40	E16-1001	Pinion gear
41	E03-7801	Bearing retainer screw
42	E16-2901	Body
43	B79-0101	Anti-reverse cam
44	E13-9101	Anti-reverse lever
45	E15-3101	Anti-reverse pawl washer
46	E16-0901	Anti-reverse pawl
47	E13-9401	Anti-reverse pawl spring
48	E03-3001	Anti-reverse pawl collar
49	B00-8601	Anti-reverse pawl screw
50	B74-2501	Oscillating gear
51	E20-2701	Drive gear
52	E13-9802	Drag adjusting leaf spring
53	375-8500	Drive gear washer
54	E16-3101	Side cover
55	E13-0502	Side cover screw
56	E16-4701	Handle assembly
57	E20-8901	Handle lock washer
58	E00-1805	Handle lock screw